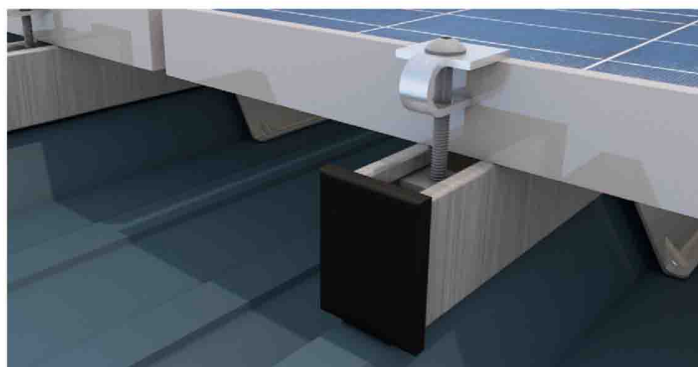




Solar roof mounting system - OPTIMA® Definition and technical characteristics

Optima® is the **secure solution for installing photovoltaic modules on terrace rooftops**. Optima®'s various mounting options allow you to select the best solution in order to optimize your solar system by 10° right up to 30°.



Quick fastener and blocking plate



Tile-effect

The interests of using the mounting system Optima®

An intelligent and tested product

- Adaptable to most trapezoidal steel roofings
- Patented system. Test report Bureau Veritas
- Use of a 100% recyclable material for structures: steel

Fitted to its environment for an optimal comfort

- The Optima® system uses the same mechanical requirements for the framed and frameless modules
- **10-year manufacturer warranty**
- Installed by certified and specially trained professionals

Optimized mastery of the management of your project thanks to an integrated design office

Increased benefits

- Fixation into the purlin
- Optimal ventilation
- ETN Certification
- Easy and fast installation

Framed modules



Optima® is fixed **into the purlin** and ensures the **optimum stability of the photovoltaic installation** even in strong wind or hurricane conditions.

The rail support is equipped with a **compression seal** which adapts itself to different shapes of IBR roofing sheet. It replaces the existing support and no new drilling operation into the rooftop is required.

Frameless modules (biglass, laminated modules)



With the Optima® mounting system, frameless modules can be installed in **portrait or landscape** configuration depending on local aesthetic requirements, «flat-roof» or «tile-effect». The latter allowing easier rooftop maintenance.

Features

Reorientation Optima +



The Optima® option permits to increase **the tilt of the modules** for a **higher energy output**.

This option is based on Advantage® integration system and offers a solution and offers a solution for rooftops with insufficient slope or exposure.

Maintenance

Produtia has developed and manufactured this steel grating to afford the service and maintenance technician safe and easy access to the modules.

This option exists as a line or column to optimize the layout.



Parts



Strut



Support Advantage



Sheet metal guard



Clamp for framed PV modules



NutClamp

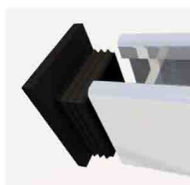


Pince Z pour modules Bi-verre

Accessories



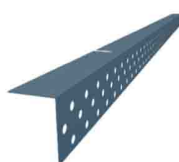
Cable retainer clip



Strut Cap



Strut connector



Bird guard



Clipping end clamp



Clamp for frameless PV modules

Recap chart

Fixation	On steel or wood purlin
Material	Acier magnelis ou Z600 steel
Inclination of the roof	0° to 45°
Steel roof	IBR (Trapezoidal)
Module orientation	Landscape
Module characteristics	Framed and frameless modules Thickness: up to 50 mm Width: from 950 à 1050 mm Length : from 1550 à 2070
Pitch	Up to 333 mm
Certification	ETN - Enquête de Techniques Nouvelles
Warranty	Anticorrosion Z600 treatment Marine environment warranty
Screws	Zinc-plated or stainless steel
Automatic grounding	Patented system. Test report Bureau Veritas